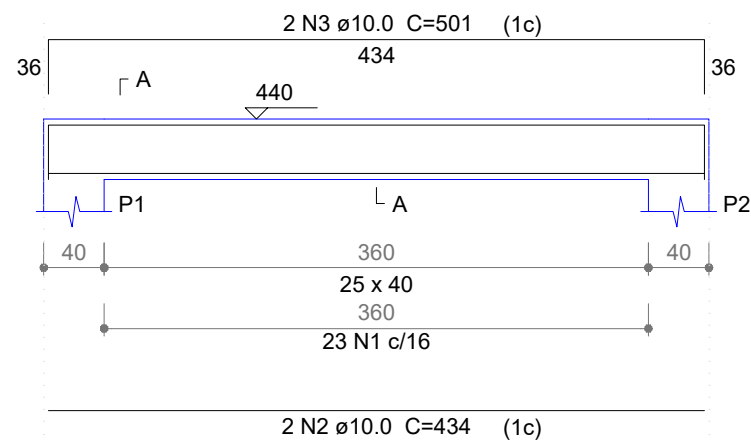
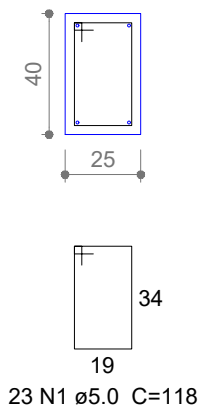


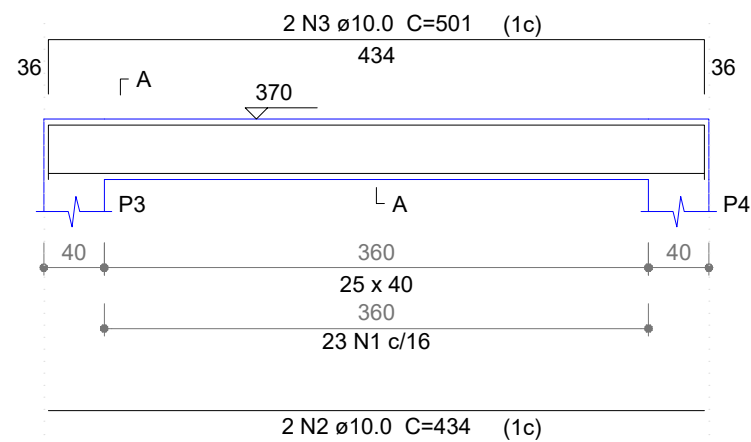
V1  
ESC 1:50



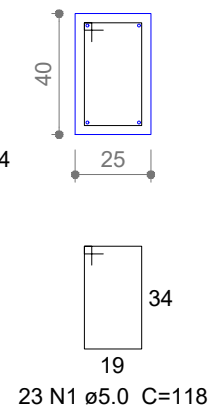
SEÇÃO A-A  
ESC 1:25



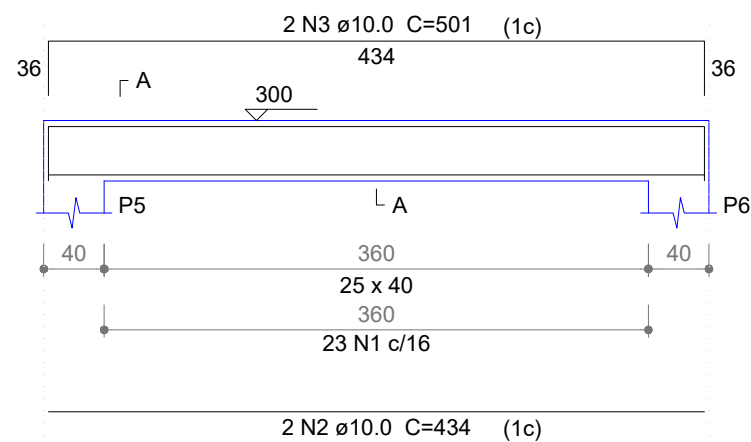
V2  
ESC 1:50



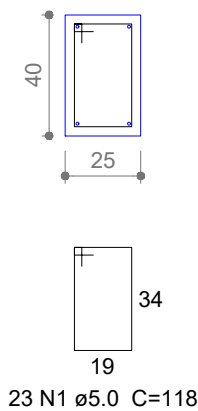
SEÇÃO A-A  
ESC 1:25



V3  
ESC 1:50



SEÇÃO A-A  
ESC 1:25



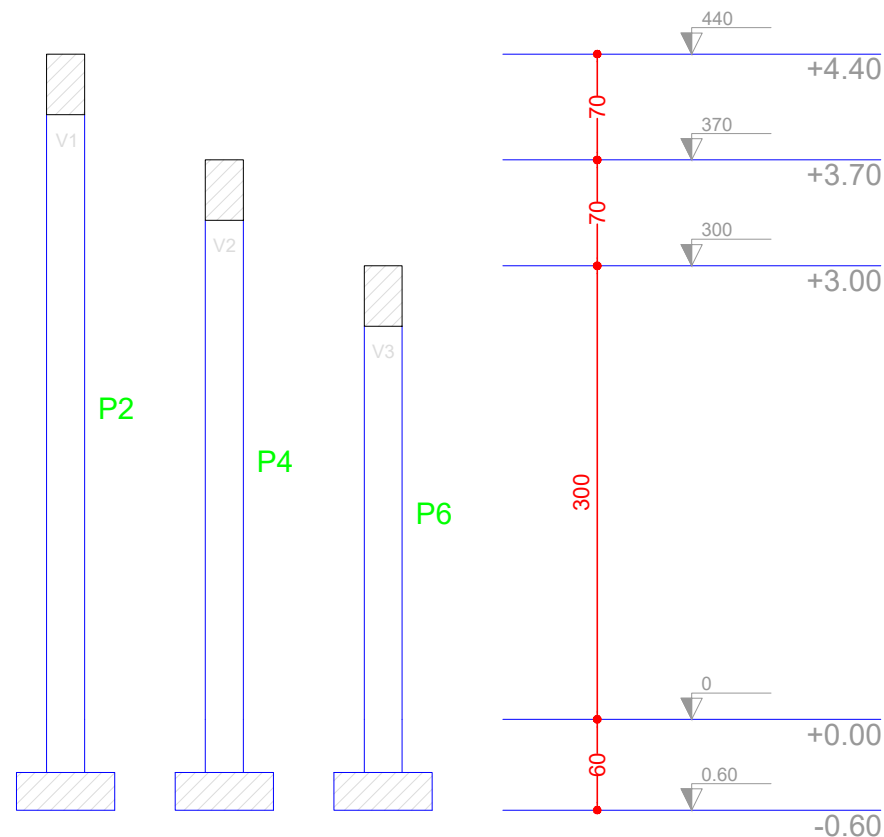
Relação do aço

ELEMENTO	AÇO	N	DIAM (mm)	QUANT	C.UNIT (cm)	C.TOTAL (cm)
V1	CA60	1	5.0	23	118	2714
	CA50	2	10.0	2	434	868
	CA50	3	10.0	2	501	1002
V2	CA60	1	5.0	23	118	2714
	CA50	2	10.0	2	434	868
	CA50	3	10.0	2	501	1002
V3	CA60	1	5.0	23	118	2714
	CA50	2	10.0	2	434	868
	CA50	3	10.0	2	501	1002

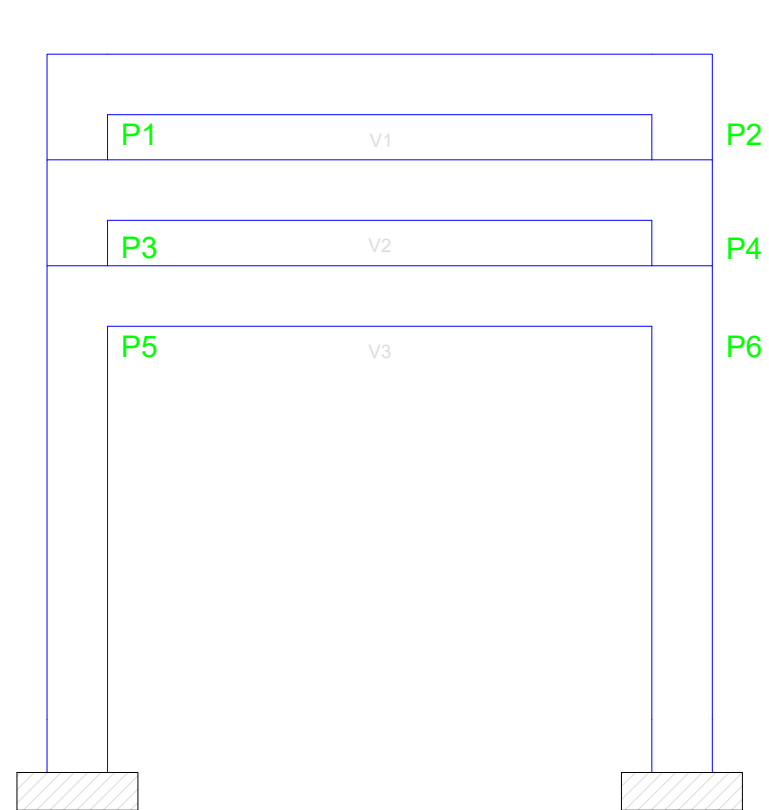
Resumo do aço

AÇO	DIAM (mm)	C.TOTAL (m)	QUANT (Barras)	PESO (kg)
CA50	10.0	56.1	5	34.6
CA60	5.0	81.5	-	12.5
PESO TOTAL (kg)				
CA50	34.6			
CA60	12.5			

Volume de concreto (C-25) = 1.32 m³  
Área de forma = 13.86 m²



CORTE A-A  
escala 1:50



CORTE B-B  
escala 1:50

Saulo Marjorie Gonçalves Silva Bezerra  
Engenheiro Civil  
CREA/CE: 330959 / RNP: 061684178-8

PROJETO ESTRUTURAL

VIGAS

resp. téc.: Saulo Marjorie Gonçalves Silva Bezerra

CREA: 330959CE

folha

escalas indicadas

Reforma da Praça no bairro de Fátima

4/4